

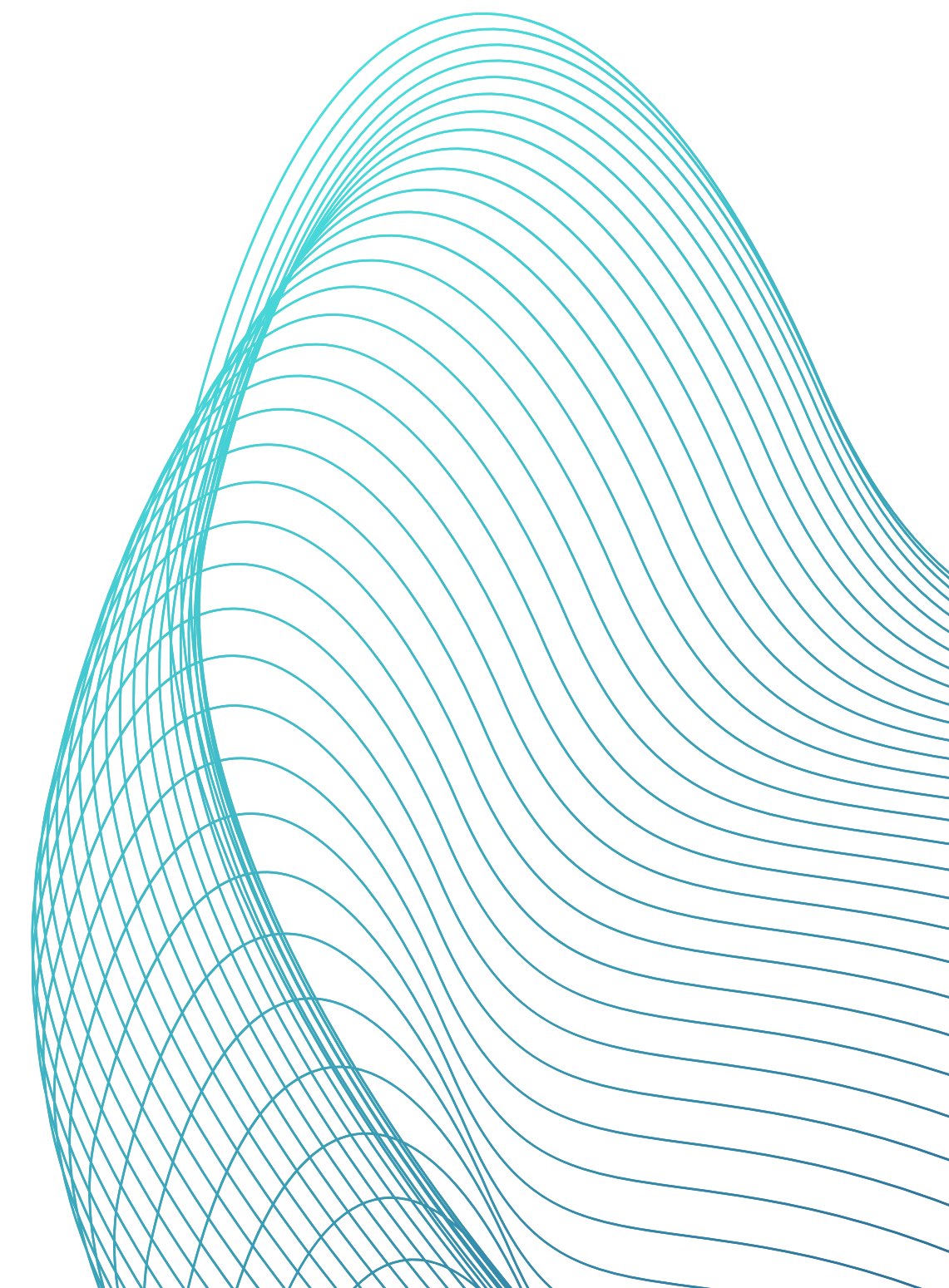


INITIAL SURVEY REPORT **HOMEBASE PLANTATION SDN BHD** **KLUANG, JOHOR**

PLANTATION: PALM OIL & ORCHARD

SITE INFORMATION

Location	: Homebase Plantation Sdn Bhd - Kluang, Johor
Coordinates	: 2°04'30"N, 103°21'58
Width of Area	: 317.80 Hectare
Year of Establishment	: 1924
Plant Nature	: Plantation
Plant Asset	: Oil Palm & Orchard (Durian and Honey Jackfruit)
Ownership	: Besgrade Plywood Sdn Bhd
No. Registration	: 199401007340



SITE VISIT CHRONOLOGY

HOMEBASE PLANTATION SDN.BHD



DATE : 10 NOV 2023
SITE SUPERVISOR : FADHIL AHMAD RAJINI
FARM MANAGER : NG CHEONG CHANG
COORDINATE : 2°04'30"N, 103°21'58



HOMEBASE PLANTATION SDN BHD - KLUANG, JOHOR

PLANTATION AREA



317.80 Hectare

The Survey area is situated in the Kluang district, Johor, covering 317.80 hectares and holding 4 distinct titles acquired in different years.

There are also designated areas for cultivating fruit trees including Durian and Honey Jackfruit. Furthermore, sections have been planted with Kelampayan trees for plywood production



ORCHARD - 7 ACRES

2°04'27"N 103°21'58"E



TNB CABLE TRACK (RENTICE) - 40 ACRES

2°05'10"N 103°21'22"E



ENTRANCE



The plantation road is in excellent condition, and the use of 4X4 vehicles is optimal.



PLANT AND AREA SIZE DATA

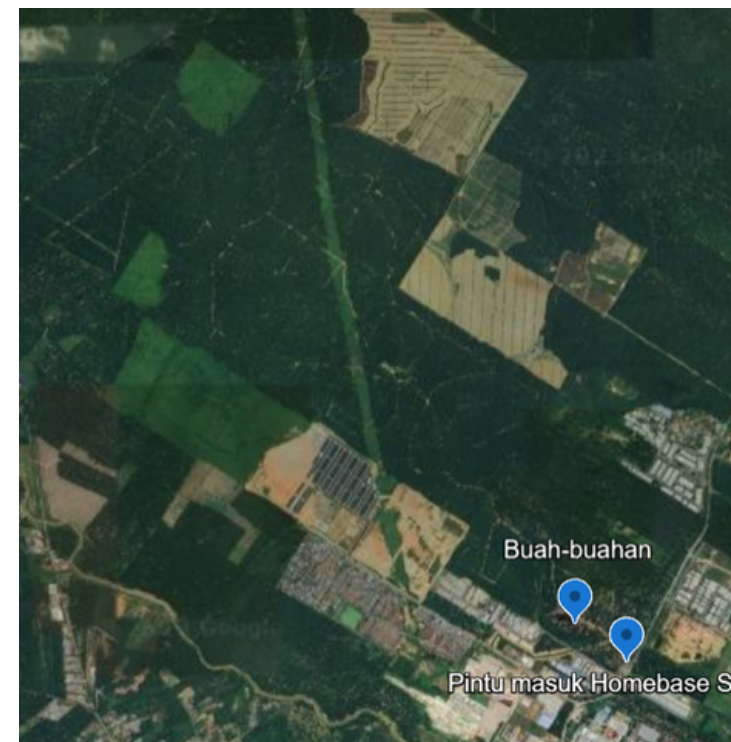
REMARKS	LOT	FIELD	ACRES	TOTAL ACRES
	1831	1	122	
	1831	2	65	
1831-96	1831			
1832-9	1832	3	105	
	1832	4	65	
	1833	5	89	
1832-49	1832			
1833-83	1833	6	132	
	1833	10	122	
	2777	13	40	740
INMATURE OIL PALM				
	2777	14	55	55
KEMPALAYAN TREES				
	1832	7	100	
	1833	9	32	
	1832	11	16	148
COCONUT PALMS				
	1833	8	132	132
ORCHARD				
	2777	FRUITS TREE	7	7
LITESITE				
	1831	GARAGE & STORE	2	2
RENTICE				
	1831	PYLON	16	
	1833	PYLON	24	40
				1124

F:14 55
F:13 40
ORCHARD 7
2777 162

F:1 122
F:2 65
F:3 96
LITESITE 2
RENTICE 16
1831 301

F:3 9
F:4 65
F:6 49
F:7 100
F:11 16
1832 239

F:5 89
F:6 83
F:10 122
F:9 32
F:8 132
RENTICE 24
1833 482



LAND TYPE



For successful oil palm cultivation, it's crucial to use soils that possess a sandy structure or sandy clay soils with adequate drainage. The Kluang District is best suited for oil palm cultivation using sandy soils or soils containing sandy limestone, as they facilitate proper water drainage and provide optimal support for plant roots.



Characteristics of the soil include a reddish hue, a rocky texture, and a high concentration of iron. Moreover, it is known to absorb water easily and has a pH range of 6.0–6.9. Although it is less fertile, oil palm cultivation can still be supported.



INITIAL SURVEY REPORT
HOMEBASE PLANTATION SDN BHD
KLUANG, JOHOR

THANK YOU